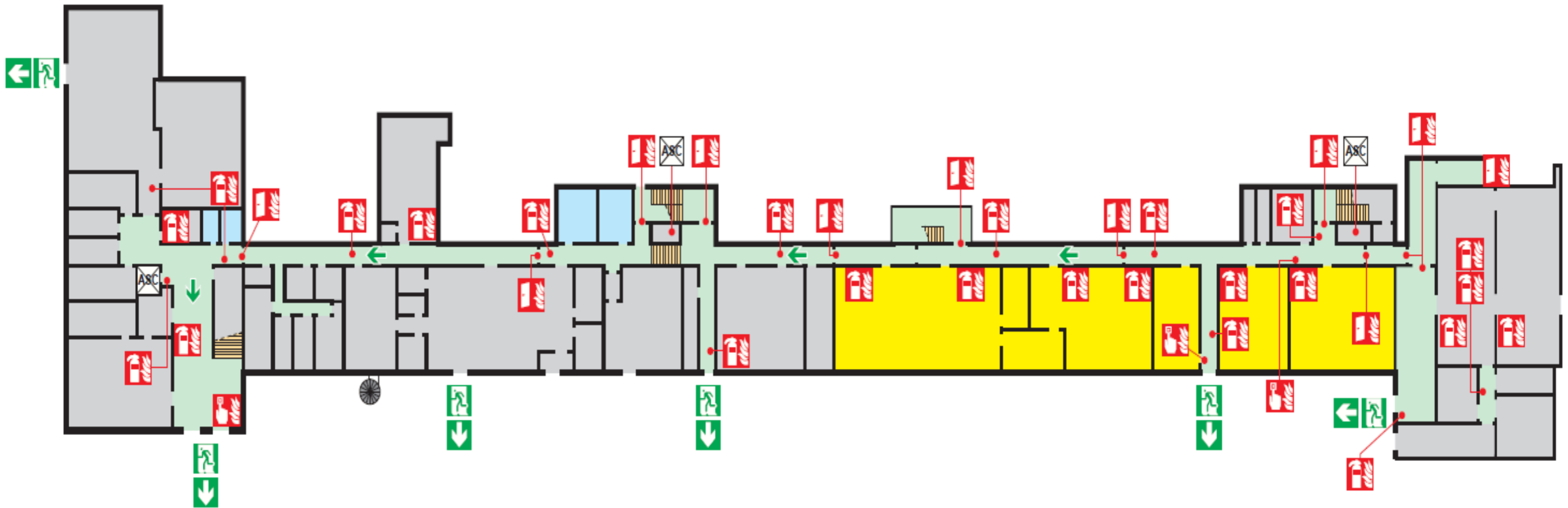


EVACUATION PLAN

Niveau 0



EVACUATION PLAN

Niveau 1


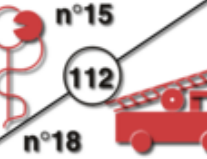








EVACUATION PLAN

Niveau 2



ACCIDENT INSTRUCTIONS

IN CASE OF AN ACCIDENT		EVACUATION INSTRUCTIONS TO BE FOLLOWED BY EVERYONE		SECURE WAITING AREA	
	PROTECT : - The victim - People nearby	THE FIRE ALARM signal an IMMEDIATE and MANDATORY EVACUATION		If you are able to evacuate on your own, you MUST NOT REMAIN in the Secure Waiting Areas.	
	CALL EMERGENCY SERVICES, provide : - The address and location of the accident - The type of accident - The number and apparent condition of victims Do not hang up until instructed to do so by the operator				WHEN THE ALARM SOUNDS
	RETURN to the accident scene		Close windows and doors without locking them Evacuate calmly using designated routes Do not use elevators	If you are unable to evacuate on your own:	
	INFORM the front desk (+33 389336800) and ENSCMu management (see above)		Persons with reduced mobility should head to the Secure Waiting Areas		 Head to the Secure Waiting Area and remind able-bodied persons to report your presence in it.
	Have someone WELCOME the emergency services		Do not go back inside Inform emergency services and/or the Assembly Point Leader if someone remains inside		
	Transporting victims in personal vehicles is FORBIDDEN		Go to the advised assembly point, then to the main assembly area with the Assembly Point Leader		Wait for emergency responders
		Re-entry into the building is only permitted when authorized by the evacuation leader			

PERSONNES À CONTACTER EN PRIORITÉ :
 F. SCHUBNEL Risk Prevention Engineer 06 16 57 04 67
 Direction : J. GODDARD 03 89 33 68 01